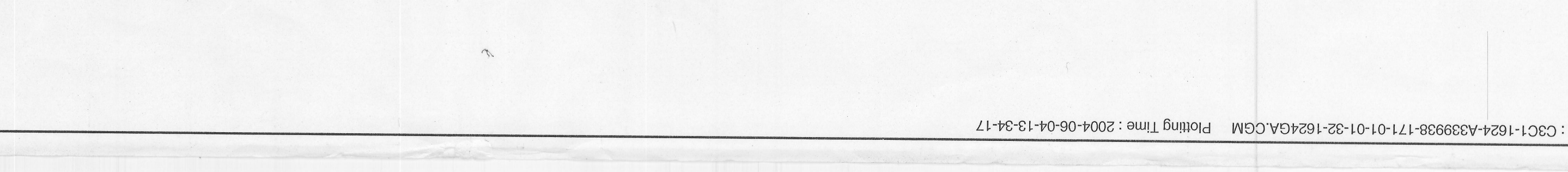
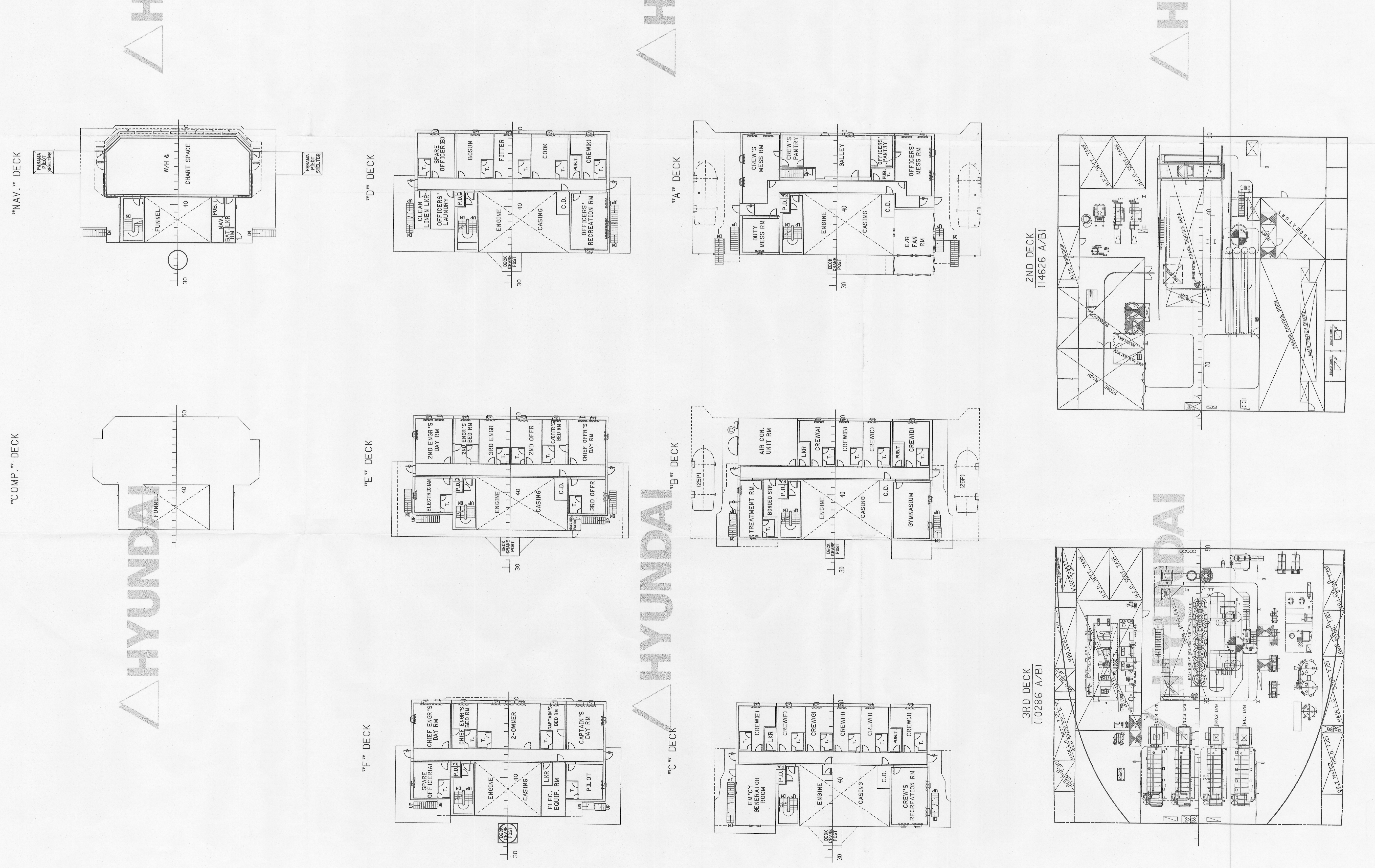
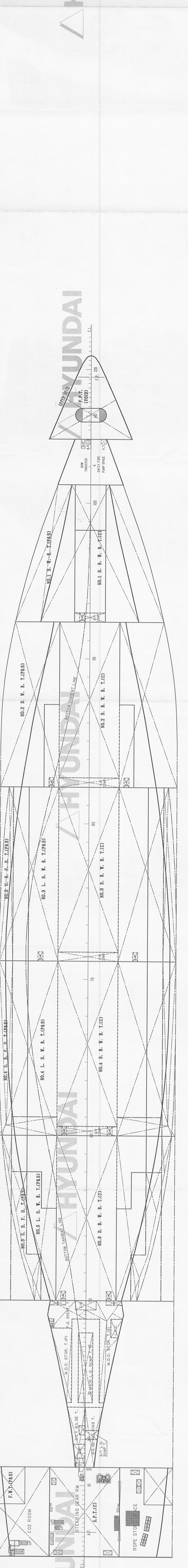
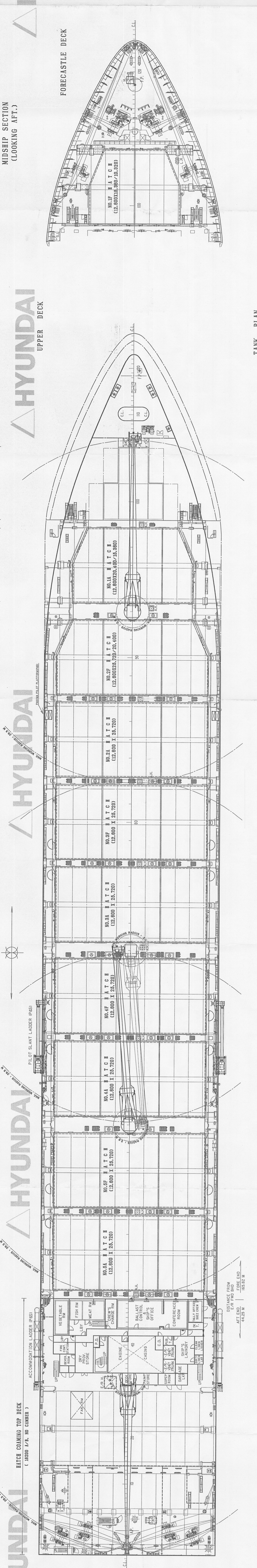
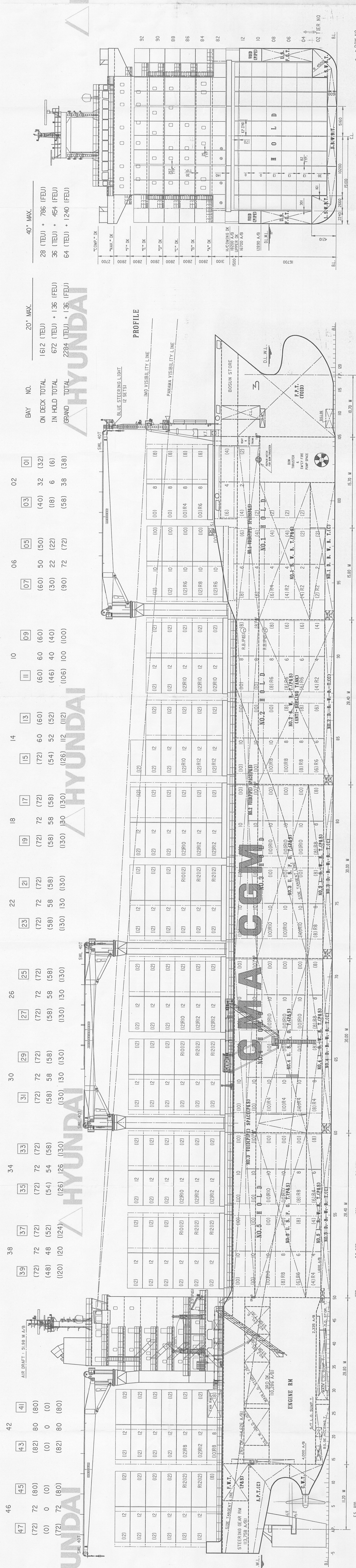


# GENERAL ARRANGEMENT (2,550 TEU CLASS CONTAINER CARRIER)



PRINCIPAL DIMENSIONS

LENGTH O. A.	210.07 M
LENGTH B. P.	180.0 M
BREADTH MLD.	30.2 M
DEPTH MLD.	18.7 M
DRAUGHT (DESIGN)	MLD. 11.5 M
DRAUGHT (SUMMER/SCANT.)	MLD. 11.6 M

FREEBOARD FOR TYPE 'B' SHIP  
CLASS : GL+10016, Container Ship  
SOLAS II-2 Reg. 19. AC. AUT. 1W  
MAIN ENGINE : HYUNDAI-SULZER 7RTA72U-8  
MCR : 21,580 kW X 89 RPM  
NCR : 10,404 kW X 89.8 RPM

GENERAL ARRANGEMENT

SHIP NAME	HYUNDAI
TELLER	1524 - 1027
DESIGNER	D.C. Park
CHECKED	Yoon, J.
DATE	15. 10. 2008
CONSULTANT NO.	15 - 2008 - 201